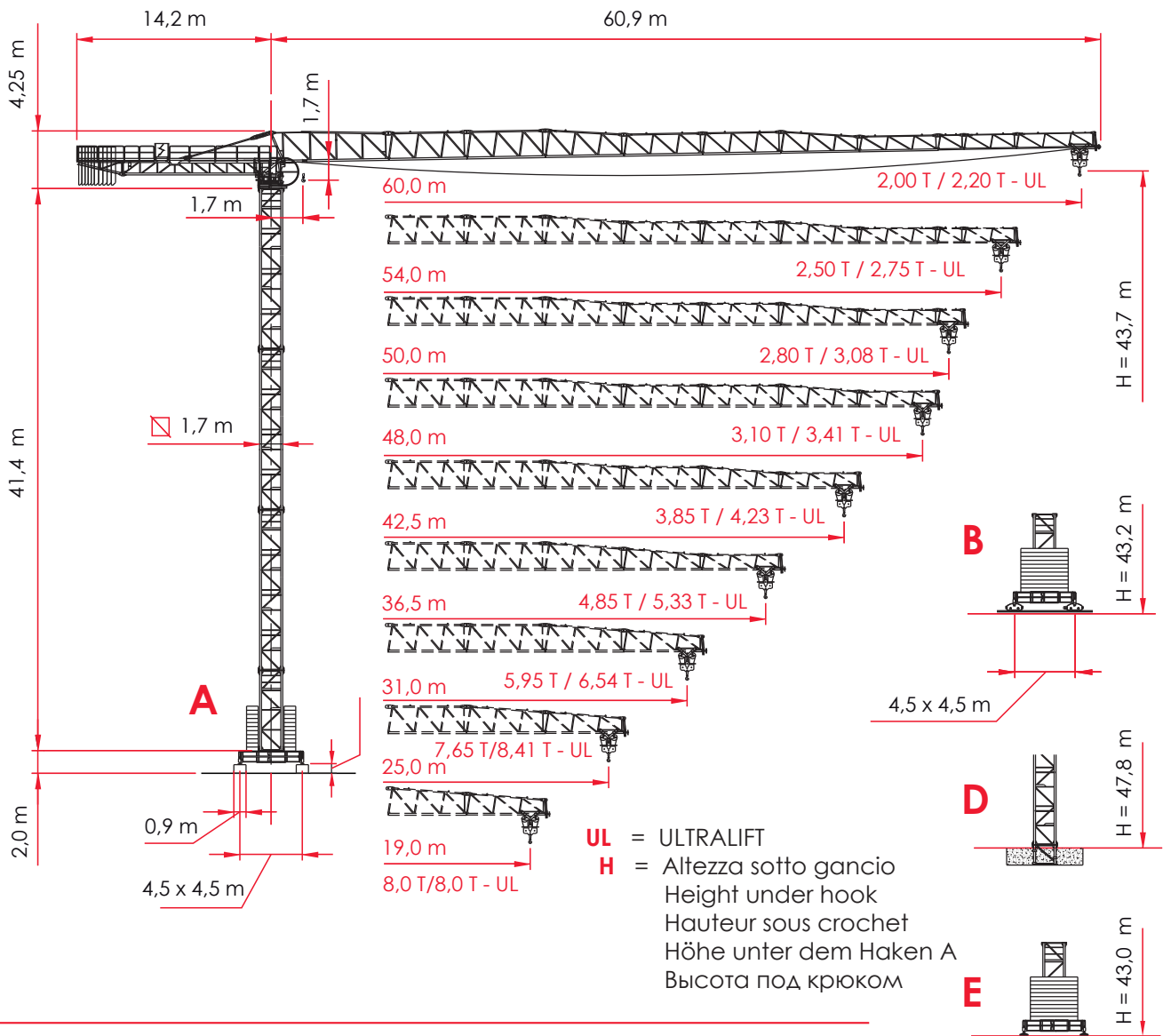




MRT180

Building tower cranes since 1946



CARLO RAIMONDI Carlo Raimondi fu Rodolfo S.p.A.
 C.so Garibaldi, 253 - 20025 Legnano (MI)
 Telefono 0039.0331.548061 Fax 0039.0331.450400
<http://www.raimondigr.com>



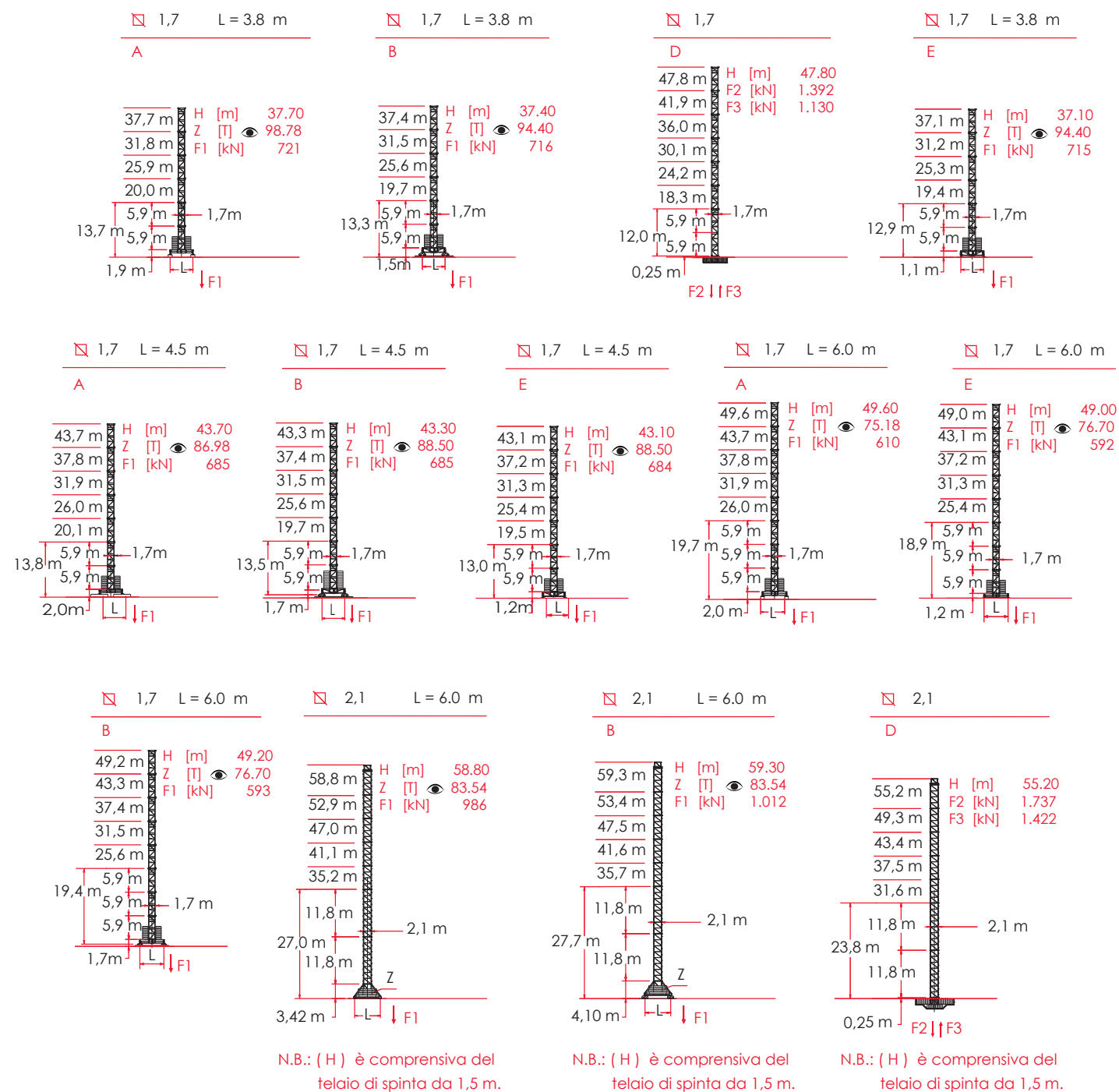
A4 FEM1.001

I	GB	F	D	RUS
SCHEDA TECNICA	TECHNICAL DATA SHEET	FICHE TECHNIQUE	TECHNISCHE INFOKARTE	ТЕХНИЧЕСКИЕ ХАРАКТЕРИСТИКИ
A GRU SU BLOCCHI	CRANE ON SUPPORT BLOCKS	GRUE SUR BLOCS D'APPUI	KRAN AUF STÜTZBLÖCKEN	КРАН НА ОПОРНЫХ БЛОКАХ
B GRU TRASLANTE	TRANSLATING CRANE	GRUE À TRANSLATION	FAHRBARER KRAN	КРАН ПЕРЕДВИЖНОЙ
D GRU SU PUNTO	CRANE ON PLINTH	GRUE SUR PLINTHE	KRAN AUF FUNDAMENTPLATTE	КРАН НА ФУНДАМЕНТЕ
E GRU SU PIEDI REGOLABILI	CRANE ON ADJUSTABLE FEET	GRUE SUR PIEDS RÉGLABLES	KRAN AUF VERSTELLBAREN FÜSSEN	КРАН НА РЕГУЛИРУЕМЫХ ЛАПАХ



CONFIGURAZIONE TORRE - REAZIONI - MRT180

TOWER CONFIGURATION - REACTIONS / CONFIGURATION TOUR - RÉACTIONS / KONFIGURAZION MIT TURM - REAKTIONEN / КОНФИГУРАЦИЯ БАШНИ - РЕАКЦИИ

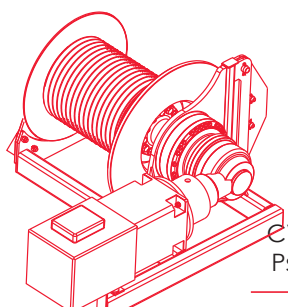


Attenersi alla zavorra indicata / Comply with the specified ballast / S'en tenir au lest indiqué / Unbedingt die angegebenen Ballastwerte einhalten / Соблюдать указанный балласт







I	GB	F	D	RUS
H [m]	HEIGHT UNDER HOOK	HAUTEUR SOUS CROCHET	HÖHE UNTER DEM HAKEN A	ВЫСОТА ПОД КРЮКОМ
Z [T]	BALLAST IN TONS	LEST EN TONNES	BALLAST IN TONNEN	БАЛЛАСТ В ТОННАХ
F1 [kN]	MAX STRESSES AT THE FOOT	EFFORTS MAX. AU PIED	MAX. BEANSPRUCHUNG AM FUSS	МАКС. УСИЛИЯ НА ПОДНОЖИЕ
F2 [kN]	BAR COMPRESSION STRESSES	EFFORTS COMPRESSION MONTANT	MAX. KOMPRESSIIONSKRÄFTE AM KRANBEIN	УСИЛИЯ КОМПРЕССИИ НА СТОЯК
F3 [kN]	BAR TRACTION STRESSES	EFFORTS TRACTION MONTANT	ZUGKRÄFTE AM KRANBEIN	РАСТЯГИВАЮЩИЕ УСИЛИЯ НА СТОЯК

CARATTERISTICHE AZIONAMENTI PRINCIPALI

MAIN DRIVE CHARACTERISTICS / CARACTÉRISTIQUES ACTIONNEMENTS PRINCIPAUX / HAUPTBEDIENUNGSEIGENSCHAFTEN /
ХАРАКТЕРИСТИКА ГЛАВНЫХ ПРИВОДОВ



380 VOLT ± 5%

	P							
	CV - ch Ps - hp	kW	m.	Kg.	m/min.	Kg.	m/min.	
6,0 T 40 HP - 3/6VF	40	30	240 450 LB	1	3000	8	6000	4
				2	3000	24	6000	12
				3	3000	38	6000	19
				4	2000	60	4000	30
				5	1500	75	3000	37,5
					0 - 600 (*)	90 (*)	0 - 1200 (*)	45
8,0 T 40 HP - 4/8VF	40	30	240 450 LB	1	4000	7	8000	3,5
				2	4000	21	8000	10,5
				3	4000	35	8000	17,5
				4	2200	56	4400	28
				5	1500	70	3000	35
					0 - 600 (*)	85 (*)	0 - 1200 (*)	42,5
8,0 T 60 HP - 4/8VF	60	45	520 LB	1	4000	7	8000	3,5
				2	4000	21	8000	10,5
				3	4000	35	8000	17,5
				4	3000	55	6000	27,5
				5	2000	75	4000	37,5
					0 - 750 (*)	90 (*)	0 - 1500 (*)	45 (*)

08 /05 - 2000 n. 2000/14/CE



0,26 / 0,48 / 0,7 min⁻¹

P = 2 X 4 kW

(*) VELOCITÀ REGOLATA AUTOMATICAMENTE DA SENSORE DI CORRENTE

SPEED AUTOMATICALLY CONTROLLED BY A CURRENT SENSOR

VITESSE RÉGLÉE AUTOMATIQUÉMENT PAR CAPTEUR DE COURANT

AUTOMATISCH DURCH STROMSENSOR GEREGELTE GESCHWINDIGKEIT

СКОРОСТЬ АВТОМАТИЧЕСКИ РЕГУЛИРУЕТСЯ ДАТЧИКОМ ТОКА



18,8 / 35,2 / 54 m/min
PROGRESSIVO - PROGRESSIVE -
ПРОГРЕССИВНЫЙ

P = 5,5 kW



20 m/min

P = 2 X 4 kW

I



FUNE

GB

ROPE

F

CABLE

D

SEILE

RUS

ТРОСЫ



MARCIA

STEP

VITESSE

BETRIEB

ПЕРЕДАЧА



CARICO

LOAD

CHARGE

LADUNG

ГРУЗ



VELOCITÀ

SPEED

VITESSE

GESCHWINDIGKEIT

СКОРОСТЬ



P POTENZA

POWER

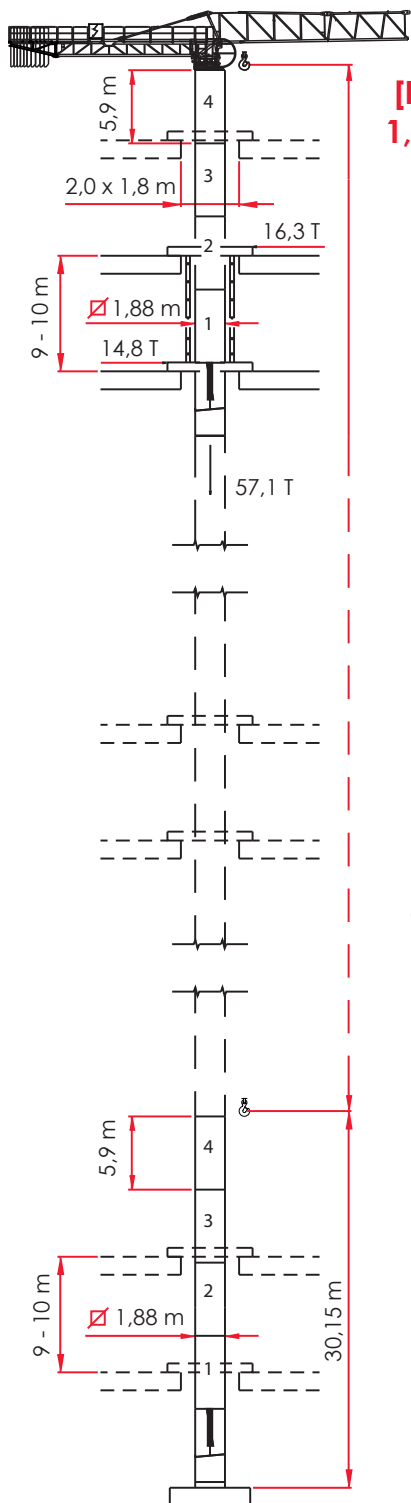
PUISSANCE

LEISTUNG

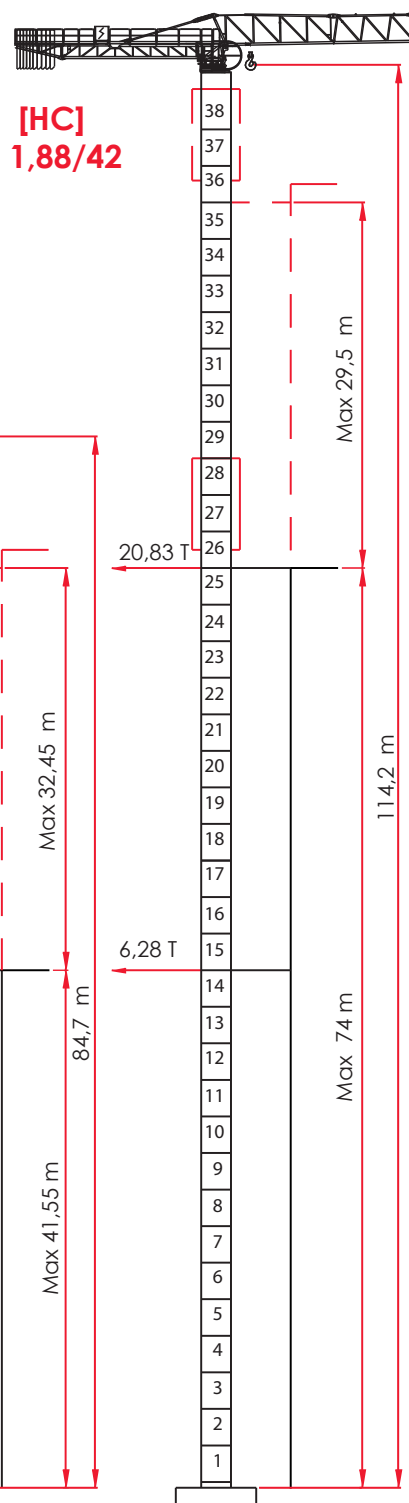
МОЩНОСТЬ

ALTRE INSTALLAZIONI - MRT180

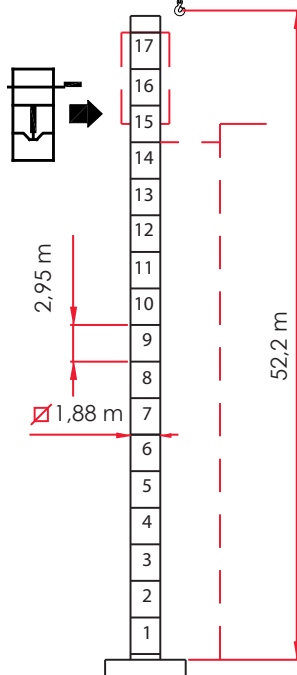
LOADING PLAN / AUTRES INSTALLATIONS / LADEPLAN / ДРУГИЕ УСТАНОВКИ



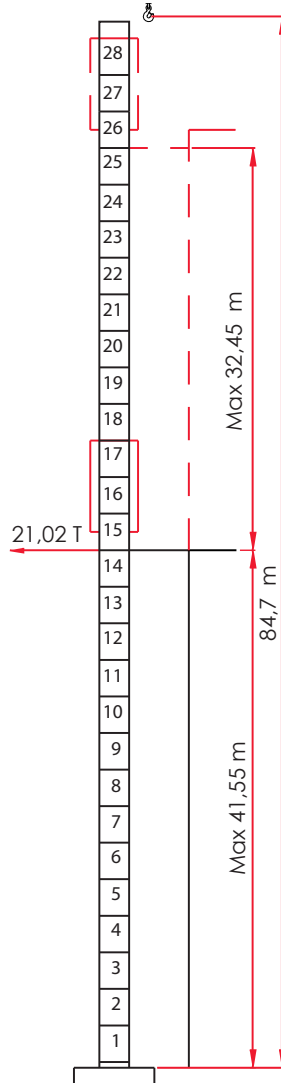
[RI]
1,88/42



[HC]
1,88/42



F



D

RUS

I
[HC] SOPRALZO IDRAULICO
1,88 / 42

GB
TELESCOPABLE
1,88 / 42

EXTERNAL CLIMBING
1,88 / 42

KLETTERKRANE
1,88 / 42

ГИДРАВЛИЧЕСКОЕ НАРАЩИВАНИЕ
1,88 / 42

[RI] GRU IN CAVEDIO
1,88 / 42

TÉLESCOPAGE SUR DALLES - 1,88 / 42




CLIMBING CRANE
1,88 / 42

KLETTERKRANE IM GEBÄUDE - 1,88 / 42

Поднимающийся на плитах перекрытия
1,88 / 42

DIAGRAMMA DI PORTATA

RANGE DIAGRAM / DIAGRAMME DE CHARGE UTILE / BELASTBARKEITSDIAGRAMM / ДИАГРАММА ГРУЗОПОДЪЕМНОСТИ

MRT 180			8.000 T / 4.000 Kg						
	19	25	31	36,5	42,5	48	50	54	60
1,7 ▶	19,0	24,0	23,9	23,6	22,7	21,5	20,7	20,5	19,3
10	8000	8000	8000	8000	8000	8000	8000	8000	8000
12	8000	8000	8000	8000	8000	8000	8000	8000	8000
14	8000	8000	8000	8000	8000	8000	8000	8000	8000
16	8000	8000	8000	8000	8000	8000	8000	8000	8000
19	8000	8000	8000	8000	8000	8000	8000	8000	8000
21		8000	8000	8000	8000	8000	7875	7782	7273
23		8000	8000	8000	7880	7418	7097	7013	6550
25		7650	7610	7506	7166	6743	6449	6372	5947
27			6972	6876	6562	6172	5900	5829	5436
29			6424	6336	6044	5681	5429	5363	4999
31			5950	5867	5595	5256	5021	4959	4619
34				5270	5023	4715	4501	4444	4135
36,5				4850	4620	4333	4134	4082	3794
38					4404	4129	3938	3888	3612
40					4142	3881	3700	3652	3390
42,5					3850	3605	3434	3390	3144
44						3454	3290	3247	3009
46						3269	3112	3071	2844
48						3100	2949	2910	2693
50							2800	2762	2554
52								2626	2426
54								2500	2307
56									2197
58									2095
60									2000



+ 100 Kg

UL [ULTRALIFT]








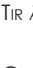



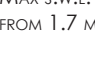
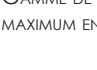

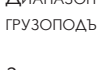


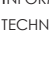


Con il sistema ULTRALIFT tutte le portate intermedie aumentano il carico del 10%

All intermediate loads are increased of 10% if the crane is equipped with ULTRALIFT control

Les charges intermediaires sont augmentes de 10% si la grue est équipée avec controle ULTRALIFT

Mit dem ULTRALIFT-System erhöhen alle Zwischenbelastbarkeiten die Last um 10%

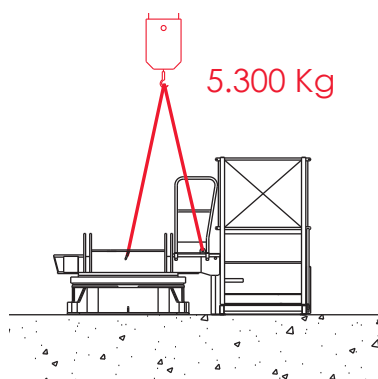
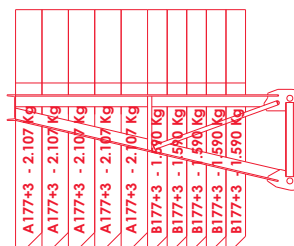
с системой ultralift все промежуточные грузоподъемности увеличиваются на 10%

I	GB	F	D	RUS
				
TIRO A DUE FUNI	TWO-ROPE PULL	TIR À DEUX CÂBLES	ZUG AN ZWEI SEILEN	ДВУКРАТНАЯ ЗАПАСОВКА ТРОСОВ
				
TIRO A QUATTRO FUNI	FOUR-ROPE PULL	TIR À QUATRE CÂBLES	ZUG AN VIER SEILEN	ЧЕТЫРЕКРАТНАЯ ЗАПАСОВКА ТРОСОВ
				
CAMPO DI PORTATA MASSIMA DA 1,7 m	MAX S.W.L. RANGE FROM 1.7 M	GAMME DE CHARGE UTILE MAXIMUM EN 1.7 M	MAX. BELASTBARKEITSBEREICH VON 1.7 M	ДИАПАЗОН МАКС. ГРУЗОПОДЪЕМНОСТИ, ОТ 1,7 М
				
INFO UFF. TECNICO RAIMONDI	RAIMONDI TECHNICAL INFORMATION DEPARTMENT	INFORMATIONS BUREAU TECHNIQUE RAIMONDI	INFORMATIONEN TECHNISCHE ABTEILUNG RAIMONDI	ЗАПРОСИТЕ ИНФОРМАЦИЮ В ТЕХНИЧЕСКОМ ОТДЕЛЕ RAIMONDI

CONTRAPPESI - MONTAGGIO E PUNTI D'IMBRACAGGIO - MRT180

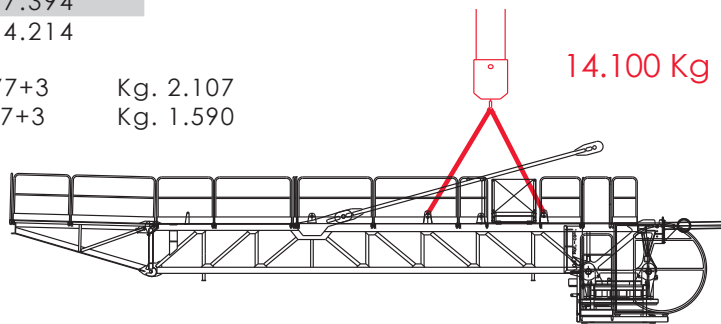
COUNTERWEIGHTS — ASSEMBLY AND SLINGING POINTS / CONTREPOIDS — MONTAGE ET POINTS D'ÉLINGAGE / GEGENGEWICHTE — MONTAGE UND ANSCHLAGPUNKTE / ПРОТИВОВЕСЫ — УСТАНОВКА И ТОЧКИ КРЕПЛЕНИЯ

m		Kg.Totali
60,00	5A + 5B	18.485
54,00	5A + 4B	16.895
50,00/48,00	5A + 3B	15.305
42,50	4A + 3B	13.198
36,50	3A + 3B	11.091
31,00	3A + 2B	9.501
25,00	2A + 2B	7.394
19,00	2A	4.214

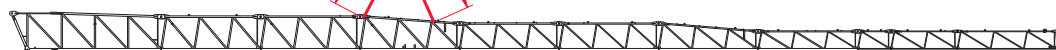


A 177+3 Kg. 2.107
B 177+3 Kg. 1.590

14.100 Kg



60.0 m
10.400 Kg



I

BILANCIAMENTO
CONTRAPPESI



VERIFICA DEI PUNTI DI
IMBRACAGGIO



ATTENERSI AL NUMERO
E TIPO DI BLOCCHI DI
CONTRAPPESO INDICATO
IN TABELLA



RICHIESTA INFORMAZIONI
UFFICIO TECNICO
RAIMONDI

GB

COUNTERWEIGHT
BALANCING

SLINGING POINT CHECK

PLEASE COMPLY WITH
THE NUMBER AND TYPE OF
COUNTERWEIGHT BLOCKS
GIVEN IN THE CHART

RAIMONDI TECHNICAL
INFORMATION DEPARTMENT

F

ÉQUILIBRAGE
CONTREPOIDS

VÉRIFICATION DES
POINTS D'ÉLINGAGE

S'EN TENIR AU NOMBRE ET AU
TYPE DE BLOCS DE CON-
TREPOIDS INDICUÉ DANS LE
TABLEAU

INFORMATIONS BUREAU
TECHNIQUE RAIMONDI

D

AUSWUCHTUNG DER
GEGENGEWICHTE

ÜBERPRÜFUNG DER
ANSCHLAGPUNKTE

DIE ANZAHL UND DEN TYP DER
IN DER TABELLE ANGEGBENEN
GEGENGEWICHTSBLOCKE
EINHALTEN

INFORMATIONEN TECHNISCHE
ABTEILUNG RAIMONDI

RUS

БАЛАНСИРОВКА
ПРОТИВОВЕСОВ

ПРОВЕРКА ТОЧЕК
КРЕПЛЕНИЯ

СОБЛЮДАТЬ КОЛИЧЕСТВО И
МОДЕЛЬ ПЛИТ ПРОТИВОВЕСА,
УКАЗАННЫХ В ТАБЛИЦЕ

СПРАВКИ В ТЕХНИЧЕСКОМ
ОТДЕЛЕ RAIMONDI

DISTRIBUTORE / DEALER / DISTRIBUTEUR / VERTEILER / ДИЛЕР



CARLO RAIMONDI S.p.A.
CORSO GARIBALDI n° 253
20025 LEGNANO [MI] - ITALY

@ www.raitmondigrup.it



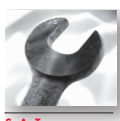
0039.0331.548061



0039.0331.450400



0039.0331.548061



0039.0331.548061.258



DIN EN ISO 9001:2000
Zertifikat n° 15 100 85248